



Over 3,000 Sq Ft of First Floor Accommodation located in a Superb Mill. Full of Character Features it would make an Ideal Gym or Workshop.

Cobden Mill

Gower St, Farnworth, Bolton, BL4 7EY

Distribution Warehouse, Gym,
Light Industrial, Trade Counter /
Showroom, Workshops

TO LET

3,186 sq ft

(295.99 sq m)

- 3,186 Sq Ft
- First Floor
- Close to Train Station
- Easy access to Motorway

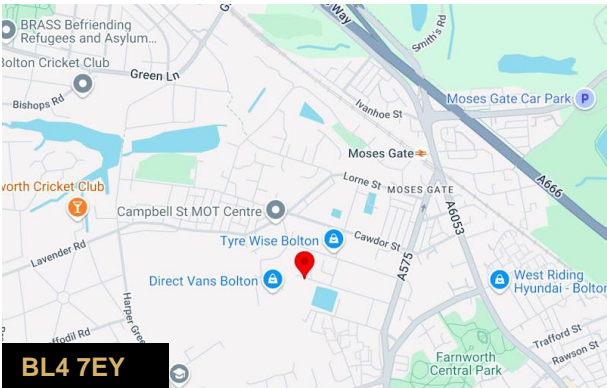
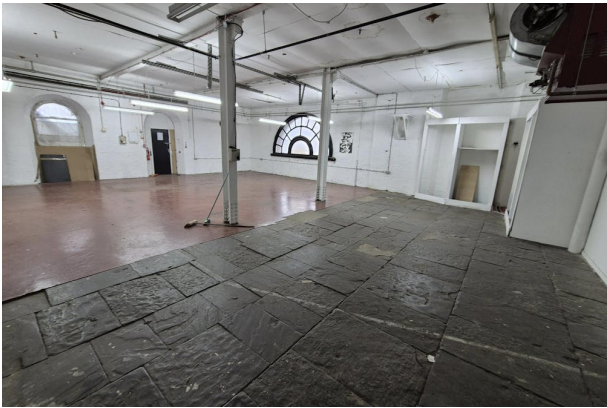
Cobden Mill, Gower St, Farnworth, Bolton, BL4 7EY

Summary

Available Size	3,186 sq ft
Rent	£12,000 per annum
Business Rates	Upon Enquiry
EPC Rating	Upon enquiry

Description

A large first floor unit located in the prestigious Cobden Mill development, with particularly large feature windows creating a bright airy space that would be ideal for a gym or artistic creative space. Cobden Mill is located within walking distance of Moses Gate Train Station and a couple of minutes drive of the Motorway Network. For more information or to arrange a viewing please contact the office.



Viewing & Further Information

son | **Stuart Pearson**
rier° | 0161 764 4440
ERCIAL | commercial@pearsonferrier.co.uk

More properties @ [pearsonferrier.co.uk](https://www.pearsonferrier.co.uk)