

MINTON PLACE

VICTORIA STREET, WINDSOR SL4 1EG

GRADE A TOWN CENTRE OFFICE SUITES AVAILABLE FROM 4,623 TO 9,556 SQ FT



mintonplace.co.uk

MINTON PLACE

VICTORIA STREET, WINDSOR SL4 1EG

Minton Place is a prominent office building located on Victoria Street in the heart of Windsor and within a short walk of Peascod Street, the High Street and Windsor Castle.

Peascod Street and the close by William Street provide a range of town centre amenities including shops, cafes and restaurants. In addition on the ground floor on Victoria Street is a large 24 hour gymnasium plus two children's activity and play centres on William Street.

Windsor Royal Shopping Centre is just a short walk away providing access to shops and restaurants located next to Windsor & Eton Central Railway Station.



mintonplace.co.uk

FLOOR AREAS

Third Floor

Suite 1	Let to The Customer Relationship Consultancy
Suite 2	4,623 sq ft
Suite 3	4,933 sq ft

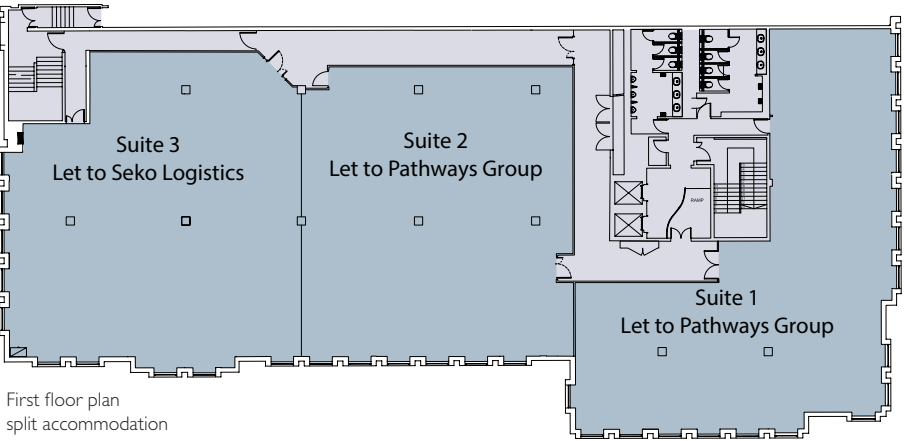
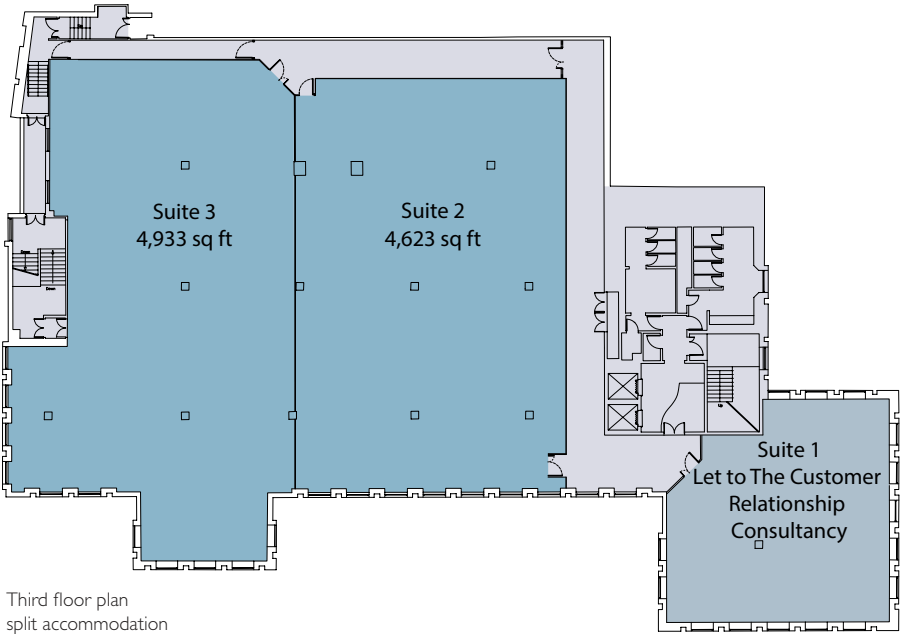
Second Floor

Whole	Let to Golfbreaks
-------	-------------------

First Floor

Suite 1	Let to Pathways Group
Suite 2	Let to Pathways Group
Suite 3	Let to Seko Logistics

Floor areas are net internal and approximate.



ACCOMMODATION

The office accommodation, common parts and reception have been refurbished to a Grade A specification offering excellent open plan accommodation.

The refurbishment includes the following:

- Reconfigured entrance & reception
- Fan coil unit air conditioning
- New suspended ceilings and LED lighting
- Full accessed raised floors
- 2 x 6 passenger lifts
- Refurbished male & female w/c's
- Shower facilities
- EPC rating of D
- Excellent car parking ratio of 1:296 sq ft net
- Bike racks



MINTON PLACE

VICTORIA STREET, WINDSOR SL4 1EG

LOCATION

Minton Place is situated in the heart of Windsor town centre, a short walk from Windsor and Eton Central Station, providing services to London Paddington via Slough. Windsor and Eton Riverside Station is also close by, providing direct services to London Waterloo. By car the M4 Motorway (J6) is a 5 minute drive away.



By Rail

Windsor Central to Paddington	29 mins
Windsor Riverside to Waterloo	56 mins

Source: National Rail

By Car

M4 (J6)	5 mins
M25	10 mins
Heathrow Airport	13 mins
Reading	26 mins
Central London	34 mins

Source: Google

mintonplace.co.uk

John Jackson 01753 410709
john.jackson@deriazcampsie.com

You should be aware that the Code of Practice on Commercial Leases in England and Wales strongly recommends you seek professional advice from a qualified surveyor, solicitor or licensed conveyancer before agreeing or signing a business tenancy agreement. The Code is available through professional institutions and trade associations or through the website - www.commercialleasecode.co.uk

Disclaimer: The Agents for themselves and for the Vendors or Lessors of the property whose agents they are give notice that: I) these particulars are given without responsibility of The Agents or the Vendors or Lessors as a general outline only, for the guidance of prospective purchasers or tenants and do not constitute the whole or part of an offer or contract; II) The Agents or cannot guarantee the accuracy of any description, dimensions, references to condition, necessary permissions for use and occupation and other details contained herein and any prospective purchasers or tenants should not rely on them as statements or representations of fact but must satisfy themselves by inspection or otherwise as to the accuracy of each of them; III) no employee of The Agents has any authority to make or give any representation or warranty or enter into any contract whatsoever in relation to the property; IV) VAT may be payable on the purchase price and/or rent, all figures are quoted exclusive of VAT, intending purchasers or lessees must satisfy themselves as to the applicable VAT position, if necessary by taking appropriate professional advice; V) The Agents or will not be liable, in negligence or otherwise, for any loss arising from the use of these particulars. October 2018.

**deriaz
campsie**
01753 854555