

AXIS HOUSE

TUDOR ROAD MANOR PARK
RUNCORN CHESHIRE WA7 1BD

1ST FLOOR NOW FULLY LET



LOCATED IN ONE OF THE PREMIER BUSINESS LOCATIONS IN THE NORTH-WEST



Situated on the popular Manor Park Development in Runcorn, Axis House provides high quality workspace ideal for businesses looking for a comemporary office in a carefully managed environment.

Axis House is a modern three storey office building providing a range of suites from 738 - 9,000 sq. ft. of office accommodation benefiting from ample on-site parking, a large ground floor reception and WC's.

SPECIFICATION:

- Air-conditioning
- New double glazed uPVC windows throughout
- On-site car park spaces (ratio 1:195 sq. ft.)
- LED lighting
- Perimeter trunking
- Landscaped gardens
- CCTV and intruder alarm system

TERMS:

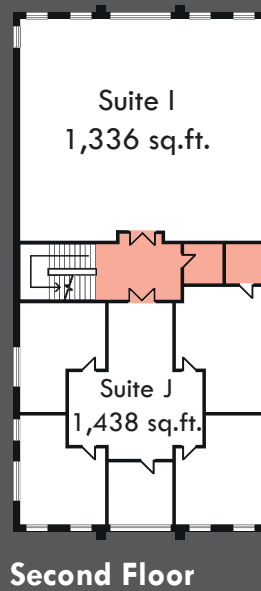
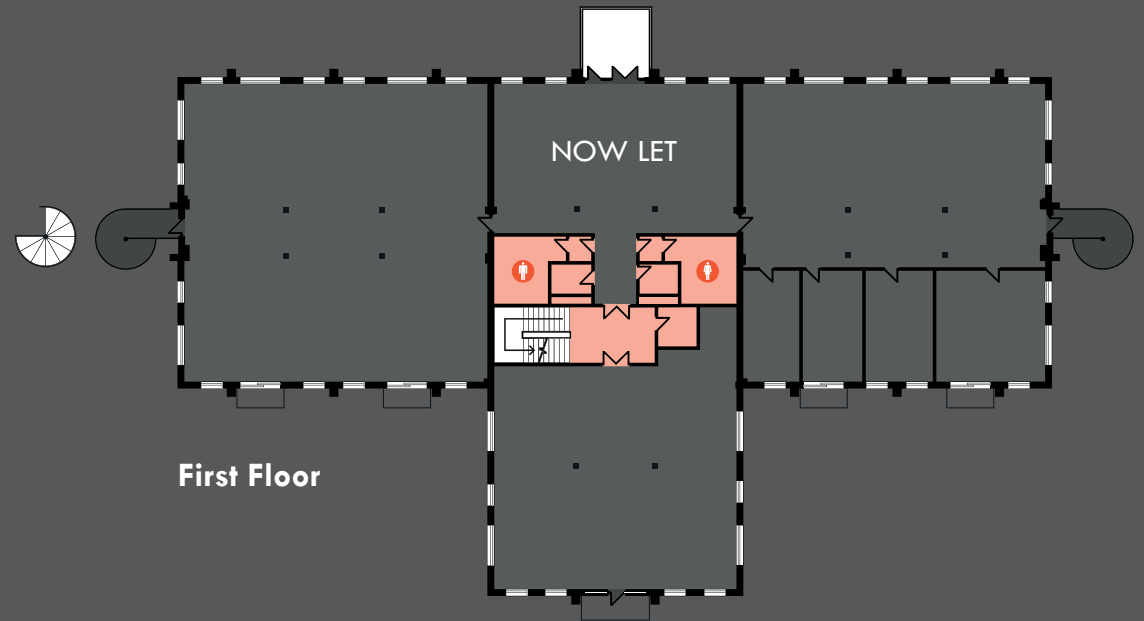
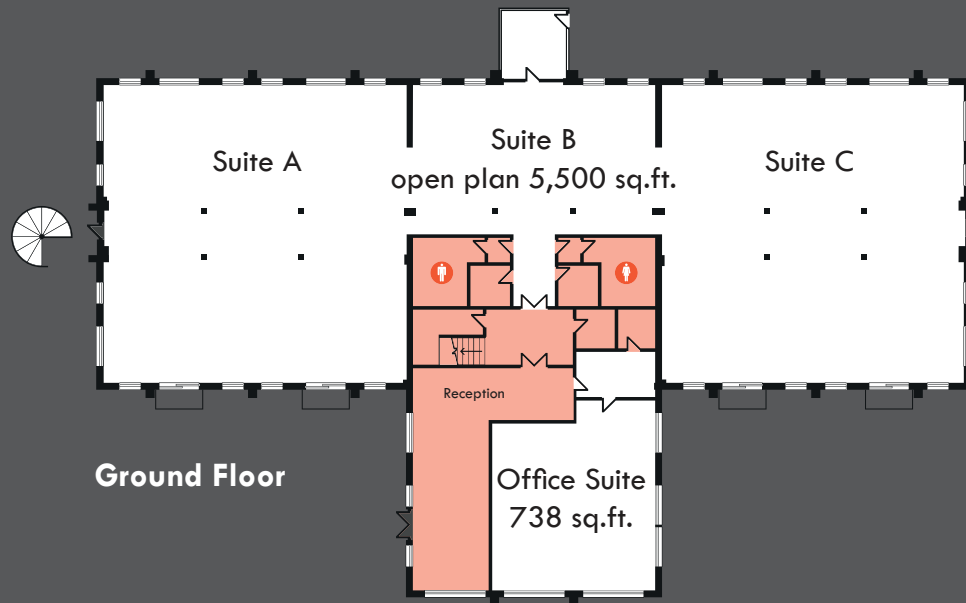
Available on an internal repairing and insuring basis from 12 months upwards.

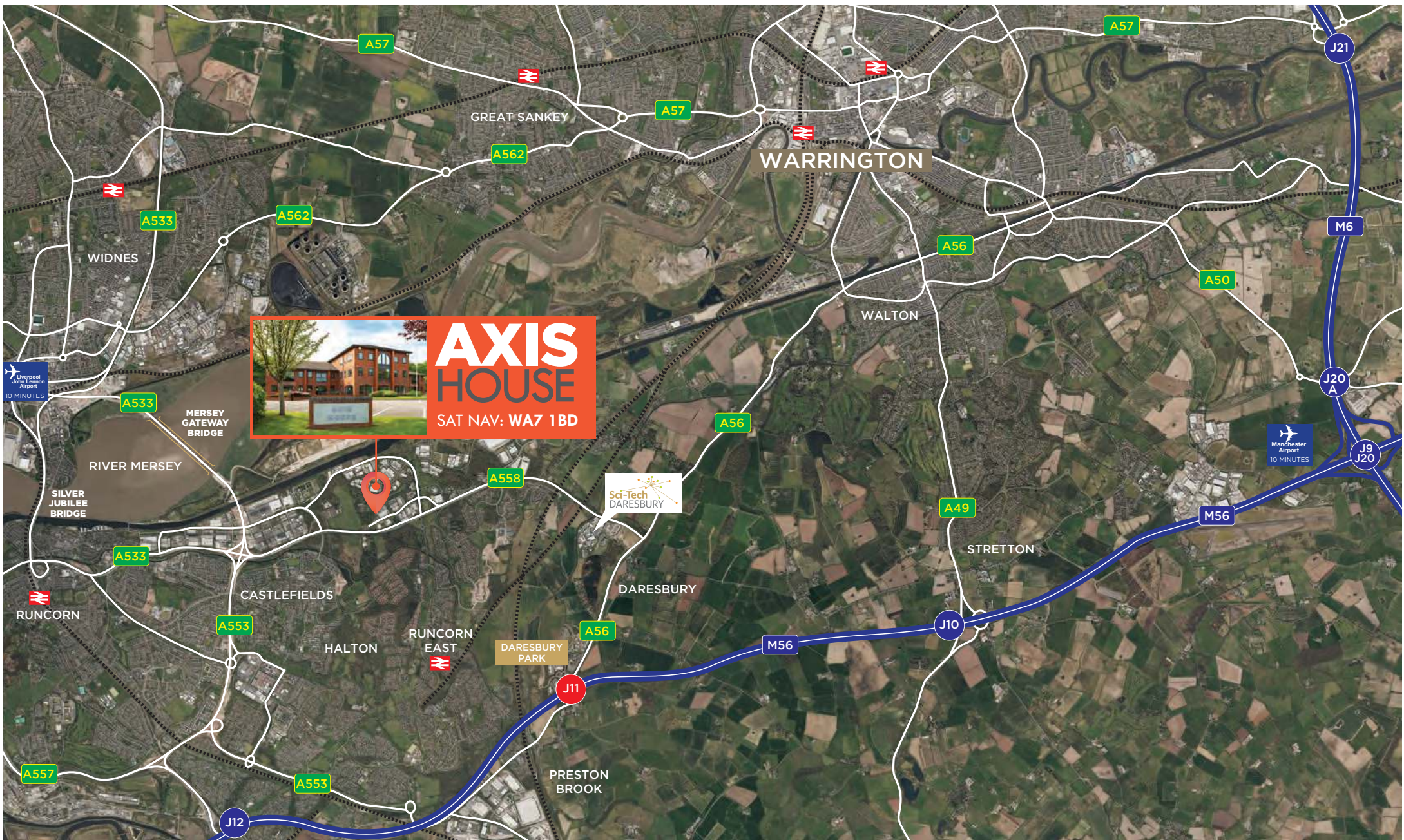


HEADQUARTER OFFICE OPPORTUNITY



FLOOR PLANS





**AXIS
HOUSE**

SAT NAV: WA7 1BD

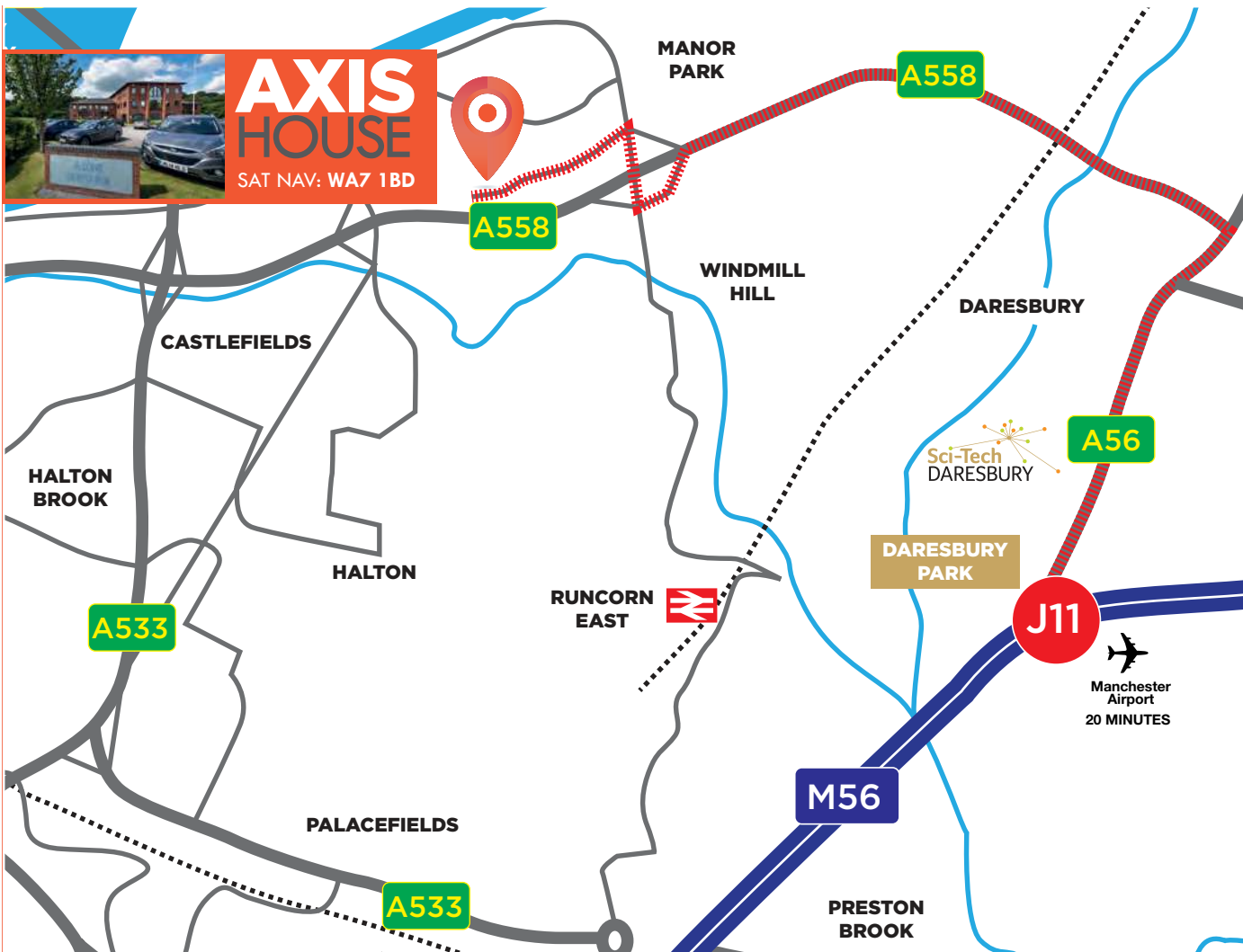
DRIVETIMES:

M6 (Lymm Interchange)	15 Mins
M56	7 Mins
A56	5 Mins

A533	4 Mins
A558	2 Mins
Manchester	45 Mins
Liverpool	30 Mins

Chester	26 Mins
Warrington	14 Mins
Runcorn Station	10 Mins
Runcorn Centre	8 Mins

Runcorn East Station	6 Mins
Manchester Airport	25 Mins
Liverpool Airport	15 Mins



DESCRIPTION:

Manor Park is ideally situated on the outskirts of Runcorn, in between Daresbury Park and Runcorn's town centre. The park is located immediately off the A558, known as the Daresbury Express-way, with further links to the M56 motorway.

Runcorn also benefits from The Silver Jubilee bridge and the Mersey Gateway bridge connecting the town to neighbouring Widnes further improving connectivity to the local area and reducing traffic congestion.

There are two train stations in the town which provide direct services to Liverpool, Birmingham and London Euston from Runcorn station and Manchester Airport and North Wales from Runcorn East.

The Park is ideally located for air travel with Manchester Airport within a 30-minute drive and Liverpool John Lennon Airport with a 15-minute drive time.

Axis House is situated just a 5 minute walk from the North Priory Café and Gardens, providing a convenient off-site amenity for break times and informal meetings.



Mersey Gateway Bridge



Liverpool



AXIS HOUSE

TUDOR ROAD RUNCORN CHESHIRE WA7 1BD

Orbit
Developments

01625 588200
www.orbit-developments.co.uk

BEgroup
01925 822112
www.begroup.uk.com

LegatOwen
01244 408200
www.legatowen.co.uk

DISCLAIMER: These Particulars are believed to be correct at time of going to Press, but the Developer reserves the right to change the scheme in the future. However, the Vendors / Lessors and Agents of this property give notice that : (1) These Particulars are intended as a general outline only, for the guidance of prospective purchasers or tenants, and do not constitute the whole or any part of an offer or contract. (2) They cannot guarantee the accuracy of any description, dimension or other details contained in these Particulars and prospective purchasers or tenants should not rely on them as statements of fact or representation, but must satisfy themselves as to the accuracy of such details. (3) No employee of the Agents has any authority to make or give any representation or warranty, or enter into any contract whatsoever in relation to the property. (4) Prices and rents quoted in these Particulars may be subject to VAT in addition. Orbit Investments (Properties) Limited Co. No. 2274745. Registered in England and Wales. JUNE2020